

For Release: Thursday, April 17, 2025

Contact: Virginia Works
Economic Information & Analytics Division
(804) 786-7496
LMI@viriniaworks.gov

Follow us on X (formerly Twitter): [@VirginiaLMI](https://twitter.com/VirginiaLMI).

**Virginia's Latest Unemployment Insurance Weekly Initial Claims Down at 3,270;
Continued Claims Up at 18,459**

RICHMOND— Virginia Works announced today that 3,270 unemployment insurance weekly **initial claims** were filed during the week ending April 12, 2025, which is 12.0 percent lower than last week's 3,714 claims and 46.1 percent higher than the comparable week of last year (2,238). Nearly 68 percent of claimants self-reported an associated industry; of those reported, the top five industries (66 percent) were Professional, Scientific, and Technical Services (465); Administrative and Support and Waste Management (269); Retail Trade (246); Manufacturing (223); and Health Care and Social Assistance (209).

Continued weeks claims (18,459) were 4.9 percent higher than last week (17,598) and were 20.9 percent higher than the comparable week of last year (15,263). Nearly 92 percent of claimants self-reported an associated industry; of those reported, the top five industries (62 percent) were Professional, Scientific, and Technical Services (3,529); Administrative and Support and Waste Management (2,152); Manufacturing (1,848); Health Care and Social Assistance (1,566); and Retail Trade (1,398).

Significant Layoffs and Announcements are available at the following websites:

[WARN Notices | Virginia Works](#)

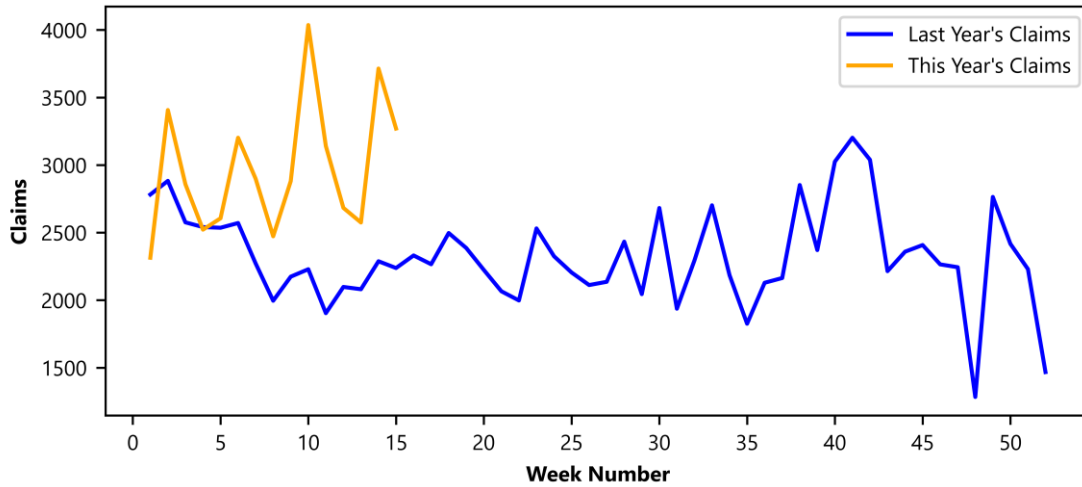
[Announcements | Virginia Economic Development Partnership](#)

(more)

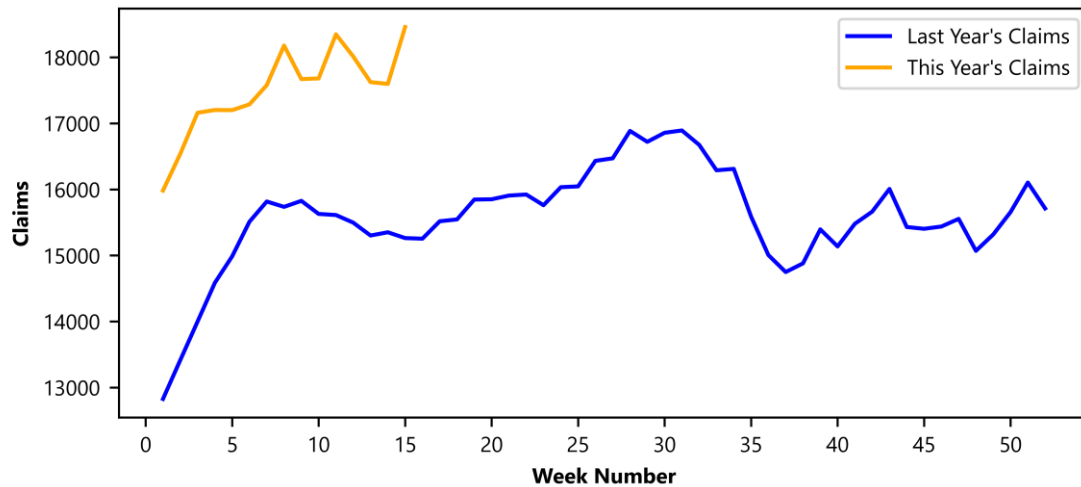
Richmond, VA

Initial Claims – Comparison of Unemployment Insurance Activity				
	Week Ending 04/12/2025	Week Ending 04/05/2025	Week Ending 03/29/2025	Last Year 04/13/2024
Initial Claims	3,270	3,714	2,575	2,238
Initial Change (%)	-444 (-12.0%)	+1,139 (+44.2%)	-108 (-4.0%)	+1,032 (+46.1%)
Continued Claims	18,459	17,598	17,625	15,263

Virginia Initial Claims by Week: Previous and Current year



Virginia Continued Claims by Week: Previous and Current year



Virginia Continued Weeks Claimed

A person who has already filed an initial claim and who has experienced a week of unemployment files a continued claim to claim benefits for that week of unemployment. On a weekly basis, continued claims reflect a good approximation of the current number of insured unemployed workers filing for UI benefits, and are a good indicator of labor market conditions. While continued claims are not a leading indicator, they provide confirming evidence of the direction of the economy.

The color-coded map below shows the distribution of this week's continued claims for Virginia's counties and cities.

Yellow represents low numbers, while progressively darker shades transitioning from yellow to green and dark green signify increasing numbers of continued claims. The legend located at the bottom provides the color spectrum and its corresponding count of continued claims.

