

For Release: Thursday, May 08, 2025

Contact: Virginia Works
Economic Information & Analytics Division
(804) 786-7496
LMI@viriniaworks.gov

Follow us on X (formerly Twitter): [@VirginiaLMI](https://twitter.com/VirginiaLMI).

Virginia Announces Latest Unemployment Insurance Weekly Initial Claims and Continued Claims

RICHMOND— Virginia Works announced today that 2,720 unemployment insurance weekly **initial claims** were filed during the week ending May 03, 2025, which is 8.1 percent higher than last week's 2,516 claims and 8.9 percent higher than the comparable week of last year (2,497). Nearly 83 percent of claimants self-reported an associated industry; of those reported, the top five industries (62 percent) were Professional, Scientific, and Technical Services (515); Administrative and Support and Waste Management (275); Retail Trade (217); Health Care and Social Assistance (208); and Manufacturing (145).

Continued weeks claims (17,896) were 1.5 percent higher than last week (17,638) and were 15.1 percent higher than the comparable week of last year (15,546). Nearly 92 percent of claimants self-reported an associated industry; of those reported, the top five industries (61 percent) were Professional, Scientific, and Technical Services (3,748); Administrative and Support and Waste Management (2,225); Health Care and Social Assistance (1,579); Retail Trade (1,392); and Manufacturing (1,161).

Significant Layoffs and Announcements are available at the following websites:

[WARN Notices | Virginia Works](#)

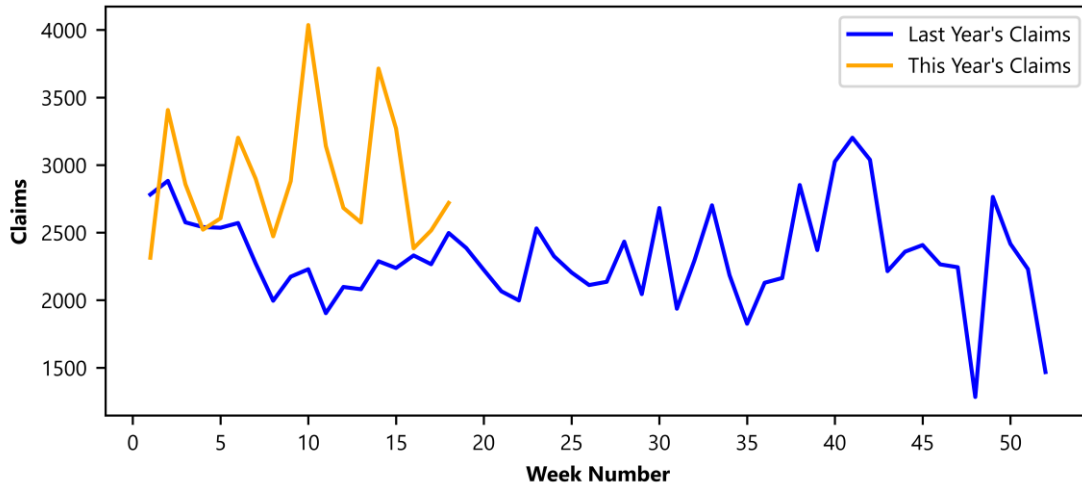
[Announcements | Virginia Economic Development Partnership](#)

(more)

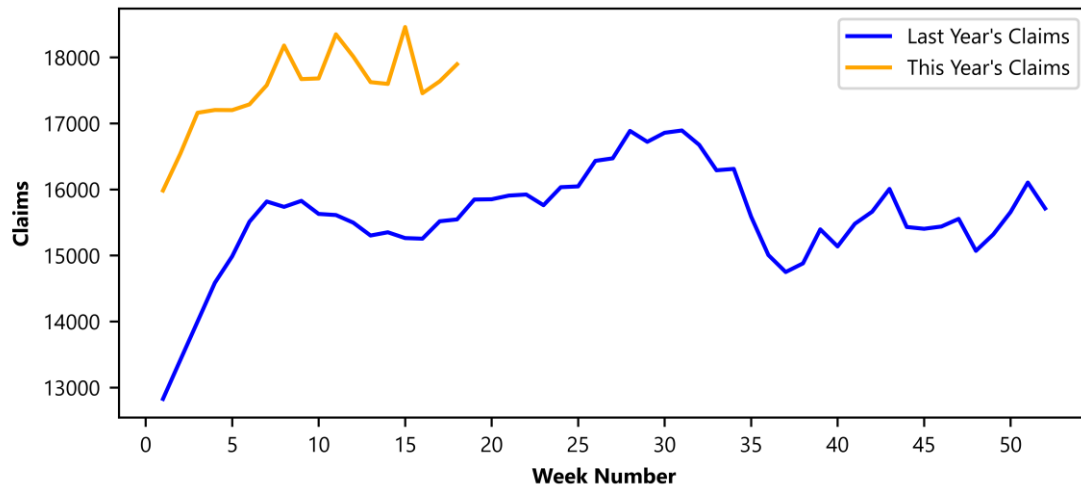
Richmond, VA

Initial Claims – Comparison of Unemployment Insurance Activity				
	Week Ending 05/03/2025	Week Ending 04/26/2025	Week Ending 04/19/2025	Last Year 05/04/2024
Initial Claims	2,720	2,516	2,384	2,497
Initial Change (%)	+204 (+8.1%)	+132 (+5.5%)	-886 (-27.1%)	+223 (+8.9%)
Continued Claims	17,896	17,638	17,457	15,546

Virginia Initial Claims by Week: Previous and Current year



Virginia Continued Claims by Week: Previous and Current year



Virginia Continued Weeks Claimed

A person who has already filed an initial claim and who has experienced a week of unemployment files a continued claim to claim benefits for that week of unemployment. On a weekly basis, continued claims reflect a good approximation of the current number of insured unemployed workers filing for UI benefits, and are a good indicator of labor market conditions. While continued claims are not a leading indicator, they provide confirming evidence of the direction of the economy.

The color-coded map below shows the distribution of this week's continued claims in Virginia's counties and cities, expressed as a percentage of each locality's labor force. This approach provides a more meaningful comparison across areas by adjusting for differences in labor force size. Yellow represents a lower percentage of continued claims relative to the labor force, while progressively darker shades transitioning from yellow to green and dark green indicate higher percentages. The legend at the bottom shows the color spectrum and its corresponding percentage ranges.

