

For Release: Thursday, July 03, 2025

Contact: Virginia Works
Economic Information & Analytics Division
(804) 786-7496
LMI@viriniaworks.gov

Follow us on X (formerly Twitter): [@VirginiaLMI](https://twitter.com/VirginiaLMI).

Virginia's Latest Unemployment Insurance Weekly Initial Claims at 2,674; Continued Claims at 20,587

RICHMOND— Virginia Works announced today that 2,674 unemployment insurance weekly **initial claims** were filed during the week ending June 28, 2025, which is 3.3 percent lower than last week's 2,766 claims and 26.6 percent higher than the comparable week of last year (2,112). Nearly 82 percent of claimants self-reported an employer which correlates to an associated industry. Based on this reporting, the top five industries (61 percent) were Professional, Scientific, and Technical Services (353); Health Care and Social Assistance (243); Administrative and Support and Waste Management (215); Manufacturing (212); and Retail Trade (188).

Continued weeks claims (20,587) were 3.8 percent lower than last week (21,399) and were 25.3 percent higher than the comparable week of last year (16,433). Nearly 92 percent of claimants self-reported an employer which correlates to an associated industry. Based on this reporting, the top five industries (62 percent) were Professional, Scientific, and Technical Services (4,487); Administrative and Support and Waste Management (2,397); Health Care and Social Assistance (1,837); Retail Trade (1,510); and Manufacturing (1,490).

Significant Layoffs and Announcements are available at the following websites:

[WARN Notices | Virginia Works](#)

[Announcements | Virginia Economic Development Partnership](#)

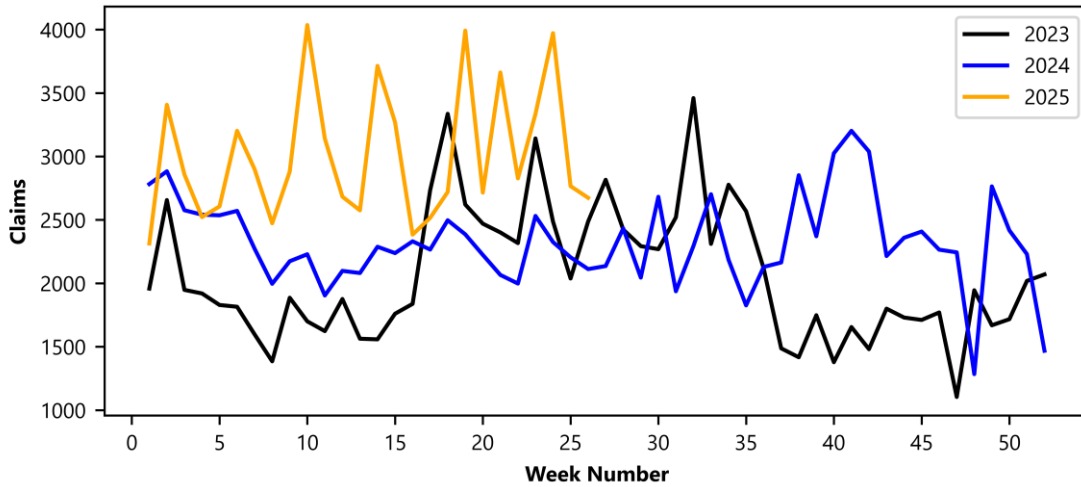
(more)

Richmond, VA

Initial Claims – Comparison of Unemployment Insurance Activity

	Week Ending 06/28/2025	Week Ending 06/21/2025	Week Ending 06/14/2025	Last Year 06/29/2024
Initial Claims	2,674	2,766	3,972	2,112
Initial Change (%)	-92 (-3.3%)	-1,206 (-30.4%)	+637 (+19.1%)	+562 (+26.6%)
Continued Claims	20,587	21,399	20,128	16,433

Virginia Initial Claims by Week



Virginia Continued Claims by Week

